

HOW TO PREPARE FOR THE

**2025
CAREERS FAIR**

WEDNESDAY 26TH FEBRUARY

Explore a range of possible careers

Find out what your next steps
might be

Explore higher education routes

FIVE

BEST WAYS TO USE THE

CAREERS FAIR

1

THINK ABOUT YOUR CAREER GOALS

Think about your ambitions
and your plans
Do you have a dream job?
Do you have a decision to
make soon?



2

HAVE A PLAN BEFORE YOU GO

Work out who you would like to
talk to
What can you find out about
them before you attend?
Decide what questions you
would like to ask them.

3

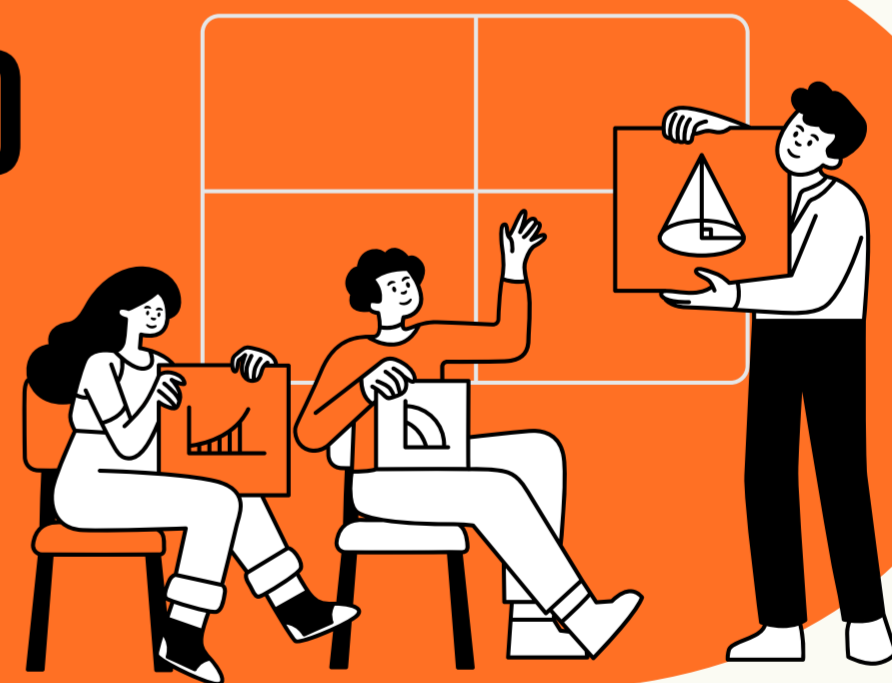
DON'T WASTE TIME

You won't have much
time in the fair
You need to follow your
plan
Maybe talk to your friends
and plan together

4

RECORD WHAT YOU'VE LEARNED

Get answers to your questions
Note down anything new that learned
Did they give you any advice about how to
find out more information?



5

DO SOMETHING WITH THE NEW INFORMATION

Think about the people that you met
Explore some of the links and opportunities
Do you need to make changes to your
career plan?



WHEN WILL I GO AND HOW MUCH TIME WILL I HAVE AT THE CAREERS FAIR?

WHEN WILL YOU BE THERE?

8:55-9:25 Year 10 Group 1

9:30-10:00 Year 10 Group 2

10:00-10:45 Quiet Session for students with sensory needs (inc Grange Park students)

10:50-11:30 Year 11

11:50-12:30 Sixth Form

12:45-13:30 Year 9

WHAT IS THIS?



Look out for this symbol in the description pages. This is an award given to employers who are committed to **recruiting and supporting employees with disabilities** (whether physical or related to learning needs or mental health). Ask them what they might do to support you.

WHAT'S THE QUIET SESSION?

The "quiet session" refers to a set time when the careers fair is intentionally **quieter and less crowded**. This is to help some students who may have sensory sensitivities, such as individuals with autism, anxiety, or other conditions that make busy, noisy environments challenging.

During the quiet session, we will reduce noise levels, dim the lights, and we will not ring the loud bell at the end that usually tells people that it's time to go.

This session allows **people who are sensitive to loud environments or crowds** to explore their options more comfortably.

The session is designed to support visitors from **Grange Park School** (our neighbouring autism specialist school), and there are spaces for some of Wrotham School's students so that they can also benefit.

THE QUIET SESSION IS OPTIONAL FOR SEND STUDENTS AT WROTHAM SCHOOL

No one will add you without your permission - we'll assume you want to be with your friends unless you tell us otherwise.

If you feel you would benefit from attending the quiet session, then either you can ask your Progress Tutor to email Mrs Hollinshead, or your parents or carers can email ahollinshead@wrotham.kent.sch.uk



WHO WILL BE AT THE CAREERS FAIR?

CAREERS SUPPORT

Look out for the Wrotham School Careers Team - we can give you impartial information and advice.

We're also the best people to ask general careers questions as well!

ASK Apprenticeships can also give you specific advice about getting apprenticeships.

SIXTH FORM AND COLLEGES

A levels, BTECs, T levels and other courses after you finish your GCSEs (including for students with EHCPs)

Look at all the courses on offer. Ask questions about entry requirements, the way courses are taught, and what people do after they've finished there.

This is a good chance to ask about the differences between sixth form and college!

EXTRA SUPPORT

Everyone should be able to talk to you about how they might support you if you have specific needs. This may be due to **SEND** or perhaps you are a **YOUNG CARER** or **CARE EXPERIENCED**.

UNIVERSITIES AND COLLEGES THAT OFFER DEGREES

Find out about what degrees are on offer (there are thousands!).

It's a good chance to find out if your dream job needs a degree, and also what you might need to do after your GCSEs to get onto their courses.

EMPLOYERS AND APPRENTICESHIP PROVIDERS

Future job opportunities for after you've left education.

Talk to employers about what pathways you might follow to get a job with them.

Ask them what they're looking for in future employees and see if they can give you advice.

A lot of them also offer work experience so it's worth asking how you apply for that. Some offer apprenticeships as well.

TOP TIPS!



USE YOUR TIME WISELY

ASK ABOUT ENTRY REQUIREMENTS

BE CONFIDENT

Your future will be different to your friends, so talk to people YOU are interested in!

BE OPEN-MINDED

You might not find the exact career you want, but look into the different pathways and routes you could follow to get there!

DON'T BE AFRAID TO ASK

QUESTIONS! Everyone is there because they want to help you. Use one of your prepared questions and the conversation will flow from there!



PLANNING WHO YOU WANT TO TALK TO

USE THE TWO TABLES TO CHOOSE WHO YOU MIGHT TALK TO

Look along the top of the table to find your interest, then look down that column to see who can talk to you about that. Then, look them up in the back pages of this booklet.

	A level programme	Mixture of A level and BTEC courses	BTEC/Vocational programme	Career-specific qualifications	Careers that require a university degree	Higher and Degree Apprenticeships (Level 4-7)	Level 2 Apprenticeships (16+)	Level 3 Apprenticeships (16+)	Level 3 Apprenticeships (18+)	Level 4-7 courses including degrees (18+)	Programmes designed for SEND/EHCP	Retake Maths and/or English GCSE	School leaver opportunities (18+)	Traineeships/internships/long work experience placements	Work Experience (16+) any time of year	Work Experience for Year 12s (July placement)	Other (come and ask us!)
Wrotham School Sixth Form	•	•	•								•	•				•	
A4G LLP Accountancy				•	•												•
ASK Apprenticeships							•	•					•				
BAM Construction					•	•		•					•		•	•	
Bearsted Counselling and Psychotherapy					•												•
Bemix											•	•		•			
The British Army					•	•	•	•	•				•	•			•
Canterbury Christ Church University					•					•			•	•			
The Civil Service					•	•	•	•	•		•		•	•	•	•	•
College of Esports					•					•							
Ebbsfleet United FC																	•
The Edge Hotel School (with University of Essex)					•					•							
H&MV Engineering					•	•							•				
Kent Police					•	•							•				
MEP Ltd (Engineering)					•	•		•	•						•	•	
MidKent College	•		•							•	•	•		•			
Moat Housing								•					•				•
NHS					•	•	•	•	•				•		•	•	•
North Kent College			•				•	•	•		•			•			
Norwich University of the Arts					•					•				•			
Rob Horswell Personal Training			•	•									•				
The Royal Marines													•				•
Social Enterprise Kent																	•
The University of Essex					•	•				•				•			
The University of Hertfordshire					•					•				•			

STEP 1: Choose the post-16 and post-18 option from across the top row. STEP 2: Look down that column to find the exhibitors who can talk to you about that option.

	Accountancy/Business/Finance	Business/Management/Consulting	Charity and Volunteering work	Creative Arts and Design	Energy and Utilities	Engineering and manufacture	Environment and Agriculture	Healthcare and social care	Hospitality and Events Management	IT and computing	Law and Legal	Sports, leisure and tourism	Marketing, advertising and PR	Media, digital and social media	Property and Construction	Recruitment and HR	Retail, customer service and sales	Science	Teacher training and education	Transport and logistics	Other
Wrotham School Sixth Form	●	●	●	●	●	●		●		●	●	●	●	●		●		●			●
A4G Accountancy	●																				●
ASK Apprenticeships																					●
BAM Construction				●		●	●								●						
Bearsted Counselling and Psychotherapy								●													●
Bemix																					●
The British Army					●	●		●		●	●	●			●			●		●	●
Canterbury Christ Church University	●	●		●		●	●	●	●	●	●	●	●	●	●			●	●		
The Civil Service	●	●					●	●			●		●	●		●				●	●
College of Esports		●							●					●							
Ebbsfleet United FC												●									
The Edge Hotel School (with University of Essex)		●							●			●									
H&MV Engineering																					
Kent Police											●										
MEP Ltd (Engineering)		●				●															
MidKent College																					●
Moat Housing	●	●								●					●	●	●				●
NHS	●	●			●			●		●				●	●	●		●			●
North Kent College																					●
Norwich University of the Arts		●		●									●	●	●						
Rob Horswell Personal Training												●									
The Royal Marines																					●
Social Enterprise Kent			●						●												
The University of Essex	●	●		●		●	●	●	●	●	●	●	●	●				●	●		
The University of Hertfordshire	●	●		●		●	●	●	●	●	●	●	●	●		●	●	●	●		

STEP 1: Choose a sector from across the top row. STEP 2: Look down that column to find the exhibitors who can talk to you about that sector.



Careers support at **Wrotham School** has been praised for being high quality for a long time by students, their families and Ofsted. Kent and Medway Careers Hub recommends our website and ideas to other schools. The team planned this event and can give you advice on who to speak to. **Make sure you're using the help available!**

Who can you speak to? Mrs Hollinshead is the Careers Lead for the school. She is qualified in careers development and guidance up to Level 6 (degree level). Mrs Cheval works with our sixth formers and has a qualification in careers information and advice.



CXK and ASK Apprenticeships provide guidance on apprenticeships, careers, and training options. They offer free, expert advice on finding apprenticeship opportunities, CV writing, interview preparation, and career planning. Their support helps people make informed decisions for their future.



Michelle delivered a Year 11 assembly about apprenticeships and an interview skills workshop with some of our sixth form students.



Social Enterprise Kent



Want to run your own business? **Social Enterprise Kent (SEK)** supports social enterprises, small businesses and community organisations across Kent. They provide advice, training, and resources to help businesses with a social purpose thrive. SEK focuses on fostering local economic growth, creating jobs, and addressing social issues, empowering individuals and organisations to make a positive impact.



Where to get advice and guidance

WHAT IF I DON'T KNOW WHO TO TALK TO?

- **YOU HAVE A DREAM JOB** Find out what you need to do to make it happen! What courses do you need to take? Do you need to go to university or is there an apprenticeship?
- **YOU KNOW THE SECTOR OR TYPE OF WORK YOU WANT** Find out what different roles you could do and what qualifications will help you on your way!
- **YOU HAVE A FAVOURITE SUBJECT** Find out where and how you can continue to study it. Ask people what your subject could lead to in their sector/industry.
- **YOU HAVE NO IDEA!** Talk to as many people as you can! Ask how they made their career decisions, what their job is like and whether they have any work experience opportunities.

WS WROTHAM SCHOOL SIXTH FORM

Wrotham School Sixth Form offers 22 different courses including a **brand new option: Medical Science**.

The courses are a mixture of A level and vocational options, and you usually **choose 3 subjects**. This is helpful whether you do or don't have a specific career in mind. They are all **level 3** qualifications, which are accepted by universities, apprenticeships and employers. **Some careers and degrees need specific A levels** - ask about these! You can also **retake** English or maths GCSE at the same time if you need to.

Ask a sixth former how it's different to Year 10 and 11

What subjects are available?

What do students do AFTER sixth form?

SUBJECTS INCLUDE: Accounting - Art - Biology - Business - Chemistry - Criminology - Drama - English literature - Film - Geography - History - IT Maths - Medical Science - Photography - Physics - Politics - Product Design - Psychology - Sociology - Sport - Wrotham Football Academy

ALEX: Not being 100% confident on what I wanted to do meant that choosing sixth form and taking 3 subjects instead of 1 specialist in college gave me time and opportunity to think about it longer.

ZEEL: I chose Wrotham School Sixth Form because I had really good support from the teachers there. It was important for me to have that kind of guidance as I moved into this next stage of my education.



Education after
your GCSEs

WHAT CAN I DO AFTER MY GCSEs?

- After your GCSEs, you can choose to **stay in education** or to join an apprenticeship.
- If you want to stay in education, there are three main options:
 - **Academic courses** like A levels are advanced qualifications that prepare you for university or careers.
 - **Vocational courses** like BTECs and T levels focus on practical skills for specific careers or industries.
 - Some providers **Specialise in support for students with EHCPs** and tailor what they do to their students, including preparation for jobs or study.



Bemix supports 16-24 year olds with learning disabilities and EHCPs. They offer personalised coaching, training, and employment support, helping individuals build confidence and skills. Bemix provides a range of programs focused on independence, career development, and social inclusion, empowering young people to thrive in society and the workplace.



MidKent College



MidKent College offers vocational courses at a range of levels, apprenticeships, and higher education qualifications across various subjects like engineering, healthcare, business, and creative industries. It has campuses in Maidstone and Medway, including the **Medway School of Arts** for 18+ students after sixth form/college.



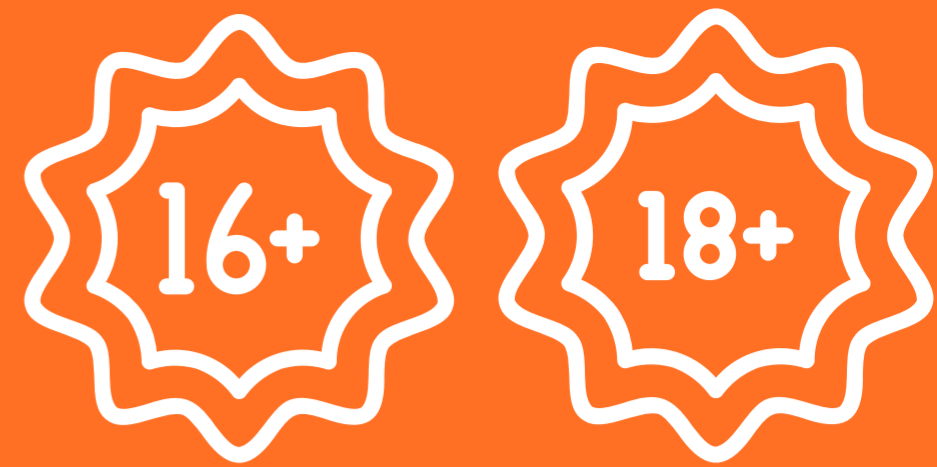
North Kent College offers a variety of vocational courses, apprenticeships, and higher education qualifications in fields like engineering, health, business, and creative arts. It has campuses in Dartford, Gravesend and Tonbridge. **Includes Hadlow College.**



ROB HORSWELL TRAINING

Part time Year 14 at Wrotham School

Rob Horswell Training's Personal Training Level 3 qualification offers students the skills and knowledge to become certified personal trainers. The course covers fitness assessment, exercise programming, nutrition, and client management, preparing graduates for a successful career in the fitness industry. **This course runs two days a week at Wrotham School and at a professional gym.**



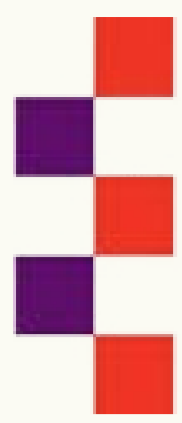
Vocational Education

DID YOU KNOW..?

- You're entitled to **three years** of free education after your GCSEs.
- At 18, you could study (for free) for a year at any of these providers.

You might do this if:

- You're considering university, but want to try a subject out first.
- You can complete a foundation degree-level qualification separate from going to university (e.g. in creative subjects)
- You need a specific qualification for a job.
- You want to build some skills during a gap year.



University of Essex



The **University of Essex** is a research university offering over 800 degrees. Subjects include law, film, theatre, computing, business and more. With 13,000+ students, it ranks in the UK's top 25 for research impact, fostering innovation and global collaboration.



Canterbury
Christ Church
University



Canterbury Christ Church

University is a university offering over 250 degrees. With 12,000+ students, it specialises in education, health, and social sciences, providing strong career support and community engagement. Talk to them about paramedicine, policing, nursing, engineering, music, TV and film, psychology and more!



Canterbury Christ Church University have helped our Year 13 students with understanding how to manage, make and save money at university.

University of
Hertfordshire **UH**

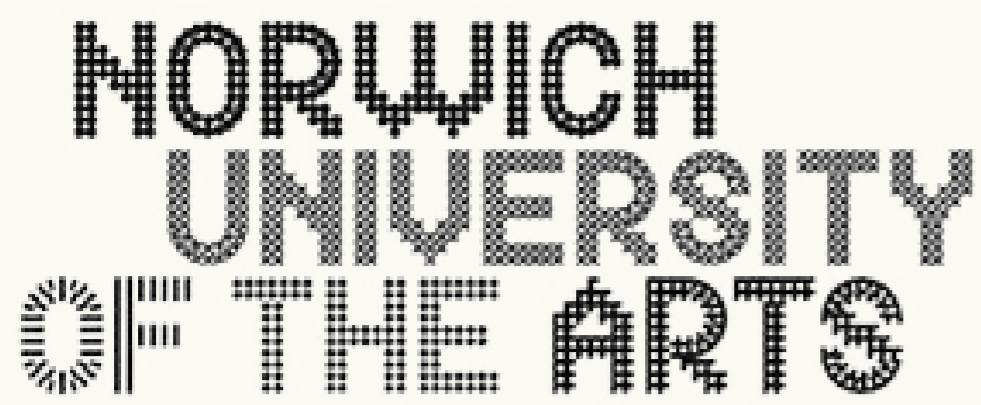


The University of Hertfordshire is a university with over 26,000+ students, ranking among the UK's top universities for student employability and innovation. It has 400+ degrees, and specialises in subjects such as aerospace engineering, computer science, business and creative arts, offering cutting-edge programs and strong industry connections.



HOW MIGHT A UNIVERSITY FIT INTO MY CAREER PLAN?

- You usually go to university at 18+, after sixth form, college or level 3 apprenticeships.
- You can continue your education in a huge **range of subjects.**
- There are different types of university
- You can study **levels 4-8** qualifications
- Degrees are qualifications that help you specialise for certain jobs in the future.
- You can study some degrees at colleges.
- If you get a **degree apprenticeship** then a university will teach you.



Norwich University of the Arts (NUA) is an art and design university offering 130+ creative courses in art, design, games, robotics and more. With 1,500+ students, NUA is known for industry-focused teaching and strong creative reputation.



NUA gave a presentation to Year 10 about creative careers and university. They also ran a workshop with Year 11-13 students about portfolios.



The **College of Esports** in London offers specialised courses in esports management, coaching, and content creation. With a focus on practical skills, it supports students in pursuing careers in the rapidly growing esports industry.



The **Edge Hotel School** offers degree programs in hospitality management. Students gain hands-on experience by working in a fully operational hotel while receiving academic training, preparing them for leadership roles in the hospitality industry. **Talk to the University of Essex about this offer.**

WHAT COULD YOU ASK A UNIVERSITY?

What courses and grades do I need to study with you?

What kind of support do you offer students?

Could I do work experience or internships at your university?



HOW MIGHT A UNIVERSITY FIT INTO MY CAREER PLAN?

- You usually go to university at 18+, after sixth form, college or level 3 apprenticeships.
- You can continue your education in a huge **range of subjects.**
- There are different types of university
- You can study **levels 4-8** qualifications
- Degrees are qualifications that help you specialise for certain jobs in the future.
- You can study some degrees at colleges.
- If you get a **degree apprenticeship** then a university will teach you.



**CHARTERED
ACCOUNTANTS**

A4G Accounting provides professional accounting and business services, specialising in tax planning, bookkeeping, and financial consulting. They support small businesses and individuals with tailored solutions, ensuring efficient financial management and compliance, while helping clients achieve their financial goals.



Previous sixth form students have been successful in getting employment and training at A4G.



BAM UK is a leading construction and engineering company, delivering sustainable projects across various sectors including infrastructure, healthcare, and education. Known for innovation and commitment to quality, BAM don't only build schools - they have built research stations in the antarctic and the new Sky studios.



BAM are building our school! They have also given talks to Year 12 and 13 about careers in construction and are offering work experience.



**ARMY
BE THE BEST**

The British Army is the top apprenticeship provider in the UK, providing comprehensive training in various fields, from combat to engineering and healthcare. As an employer, it emphasises leadership, teamwork, and personal development, offering career progression, skills development, and competitive benefits for personnel.



The British Army delivered a presentation to our Year 9 students about the range of careers available and introduced them to apprenticeships.



**Employers,
Apprenticeships and
Work Experience**

WHAT CAN I TALK TO EMPLOYERS ABOUT?

- All of these employers are here because they want to give you advice
- They can tell you about what their jobs are like, and the different types of jobs in their sector.
- Employers might offer apprenticeships (from 16+ or 18+).
- Employers might also talk to you about **graduate training programmes** that you do after getting a degree.
- Employers can also give you advice about interviews, CVs and about what subjects might help you if you worked for them.



Bearsted
Counselling &
Psychotherapy

Bearsted Counselling and Psychotherapy provides professional mental health support, offering therapeutic services for 11-18 year olds and adults. Collette helps her clients achieve emotional well-being and personal growth. She has supported young people at Wrotham School for a number of years and is always generous with her advice for young people seeking a career in psychology and counselling.



Civil Service

The Civil Service offers a range of roles in areas like policy development, project management, research, and administration. Employees can work in departments such as education, science, economics, healthcare, or finance, contributing to public services, shaping government policies, and supporting national development.



The Civil Service run an annual competition with our Year 10 students, introducing them to a range of apprenticeships and graduate programmes.



Ebbsfleet United FC offers training and career opportunities in football, coaching, and sports management. As an employer, they provide hands-on experience in a professional environment, with roles in coaching, player development, and club operations, fostering growth in the sports industry.



Ebbsfleet United are working with our Geography department on a project - watch this space!



**Employers,
Apprenticeships and
Work Experience**

WHAT CAN I TALK TO EMPLOYERS ABOUT?

- All of these employers are here because they want to give you advice
- They can tell you about what their jobs are like, and the different types of jobs in their sector.
- Employers might offer apprenticeships (from 16+ or 18+).
- Employers might also talk to you about **graduate training programmes** that you do after getting a degree.
- Employers can also give you advice about interviews, CVs and about what subjects might help you if you worked for them.



H&MV Engineering is a leading employer in the electrical engineering sector, offering roles in project management, design, and installation. They prioritise employee development, safety, and innovation, providing opportunities for career growth and hands-on experience in large-scale infrastructure projects.

WS H&MV regularly offer work experience to our Year 12 students and have a fantastic programme.



Kent Police



Kent Police offers various jobs, apprenticeships and graduate roles including policing, IT, and administration, providing hands-on training and career progression opportunities. They prioritise personal development, diversity, and community safety, supporting employees in building a rewarding career in law enforcement.

WS Kent Police have supported our sixth form Criminology students - one of their Detective Chief Inspectors came in to help them revise their learning of police procedures on crime scenes.



MEP Ltd offers apprenticeships and graduate roles in mechanical and electrical engineering, providing hands-on training and career development opportunities. As an employer, they focus on skill-building, innovation, and safety, supporting employees in gaining practical experience and progressing in the engineering sector.

WS MEP Ltd run an annual engineering competition with our Year 7 students and regularly offer work experience to our Year 12 students.



**Employers,
Apprenticeships and
Work Experience**

WHAT CAN I TALK TO EMPLOYERS ABOUT?

- All of these employers are here because they want to give you advice
- They can tell you about what their jobs are like, and the different types of jobs in their sector.
- Employers might offer apprenticeships (from 16+ or 18+).
- Employers might also talk to you about **graduate training programmes** that you do after getting a degree.
- Employers can also give you advice about interviews, CVs and about what subjects might help you if you worked for them.



Moat Housing offers apprenticeships for school leavers and roles for graduates in areas like IT, housing management, customer service, and construction. As an employer, they provide a supportive environment with opportunities for skill development, career progression, and hands-on experience in the housing sector.

WS Previous sixth form students have been successful in getting apprenticeships at Moat Housing



The NHS are the largest employer in Europe! Represented by **Kent Community Health NHS Foundation Trust** which offers apprenticeship and graduate opportunities in healthcare, IT, administration, and management. As an employer, they provide professional development, hands-on training, and career progression, making a meaningful impact in community healthcare services.

WS NHS early careers teams have given personal advice to our sixth form students for university interview preparation and apprenticeship routes. Year 7-9 students also took part in the NHS DigData Challenge.



The Royal Marines offer apprenticeship and training opportunities in various roles, including combat, leadership, and engineering. As an employer, they provide world-class training, career progression, and the chance to serve in a prestigious, challenging, and rewarding environment focused on excellence and teamwork..

WS The Royal Marines have been regular supporters of our careers fair for a number of years.



Employers, Apprenticeships and Work Experience

WHAT CAN I TALK TO EMPLOYERS ABOUT?

- All of these employers are here because they want to give you advice
- They can tell you about what their jobs are like, and the different types of jobs in their sector.
- Employers might offer apprenticeships (from 16+ or 18+).
- Employers might also talk to you about **graduate training programmes** that you do after getting a degree.
- Employers can also give you advice about interviews, CVs and about what subjects might help you if you worked for them.